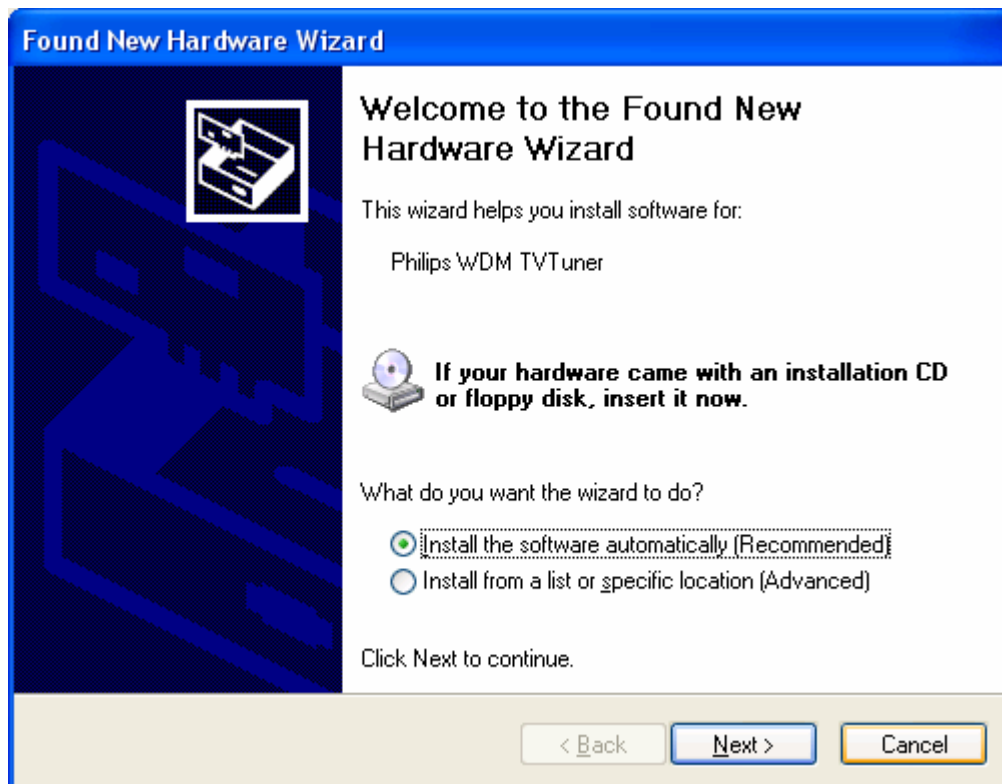


Quick Start for using TV PVR.

1. Installation

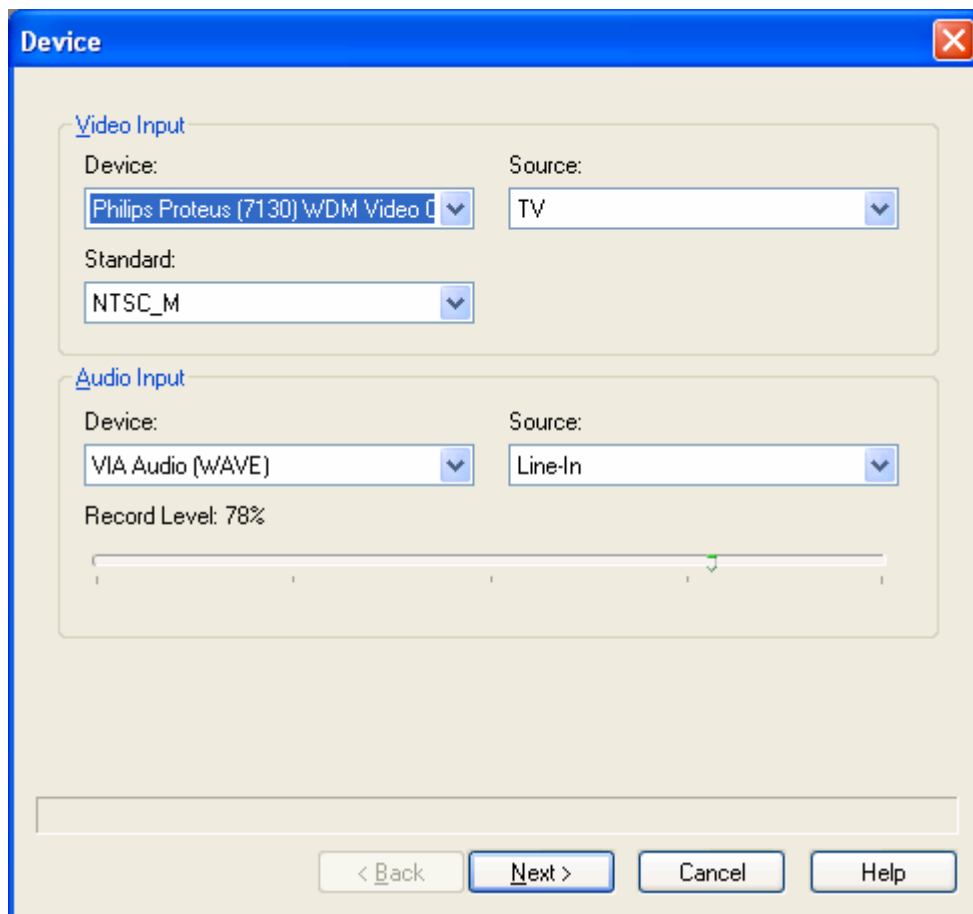


At Found New Hardware Wizard, click and point to the installation CD for driver when prompted. Windows will find **Philips Proteus (7130) WDM Video Capture**, click **Continue Anyway** and follow the wizard.



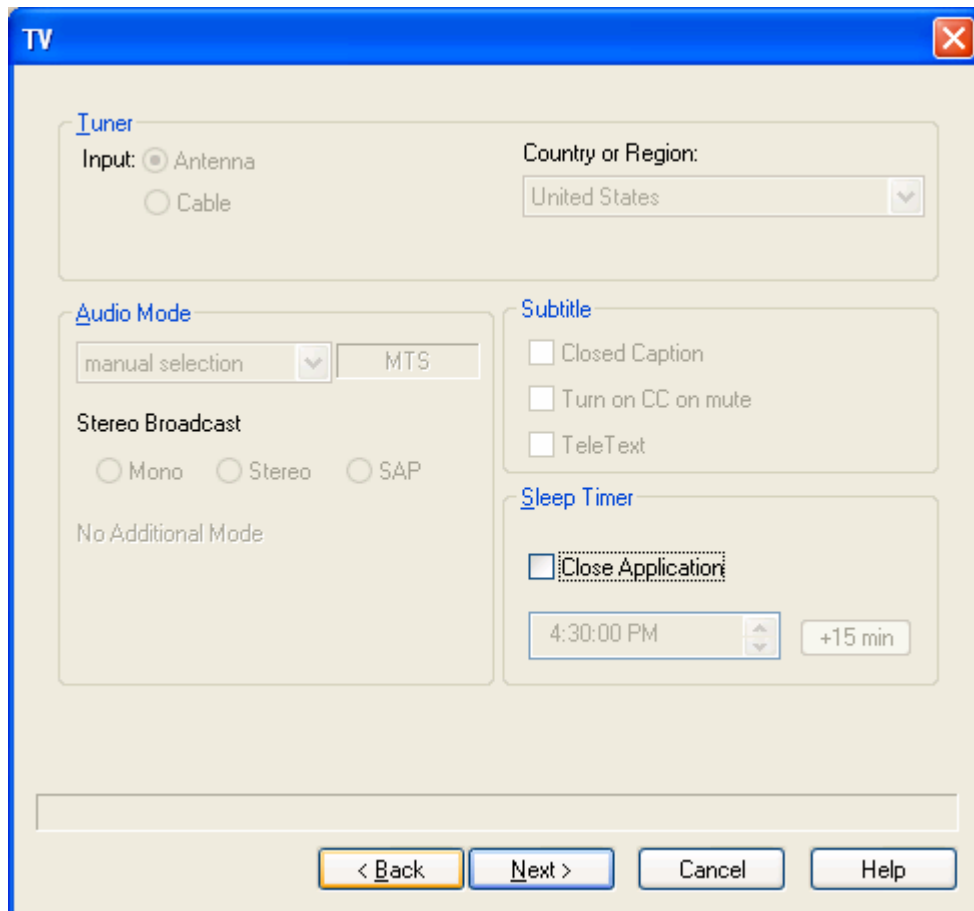
Another hardware will be detected after Philips Proteus (7130) WDM Video Capture is installed, follow the wizard by clicking "Next" until the new hardware gets installed.

2. Channel tuning in intervideo WinDVR3

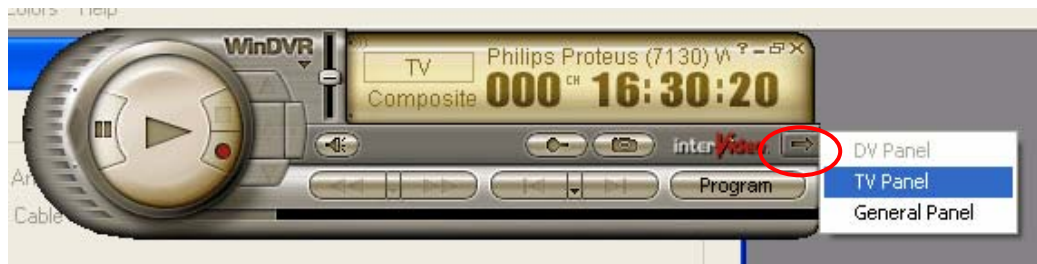


When you launched **interVideo WinDVR3**, a wizard opens up like the dialog above.

To tune your TV, select **TV** as Source and **PAL_B** (If your device is a PAL device and you are living in a PAL video standard country) as Standard and click **Next**.



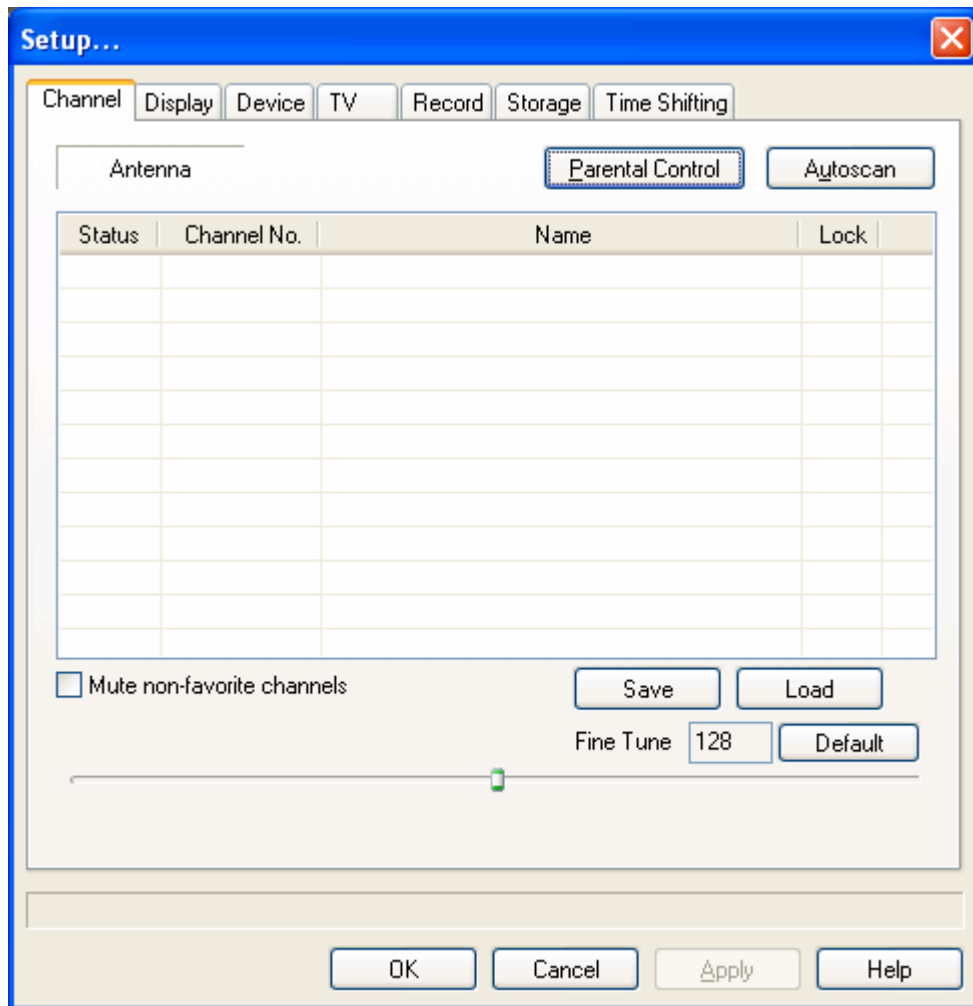
Do the setting for **Tuner Input** and select your **Country** and click **Next**.



Click on the circled icon to access to the TV Panel and General Panel dropdown list. Select **TV Panel** and the dialog below will appear.



Click on the circled **Setup** icon to do e.g. Channel tuning
 The "Device" tab will appear and select **TV** and **PAL_B** if you have not selected during the first launch of the software. Click on **Apply** and select **TV** tab.
 Do the setting for **Tuner Input** and select your **Country** and click **Apply**.



Click on **Channel** tab and click **Autoscan** to scan your channels.
 Read the **Help file** in interVideo WinDVR3 to know more about how to watch and record video.

3. Accessing to channels



When your tuning is done correctly, click on the circled area above to do Channel Up, Channel Down, last viewed channel and all channel list.

4. Recording in interVideo WinDVR3



Click on the Record button to start recording. The channel that is being viewed will be recorded. Click on the same button to stop recording.

Click on Video Source button to toggle to **S-video** or **Composite** input to record from VHS or Camcorder.

5. Channel tuning in Snazzi* PVR



Follow the steps below to tune in Snazzi* PVR:

1. Select **TV tuner**
2. Click **Capture Mode**
3. Select **TV setup** and input the **Country Code** e.g. Singapore: 65 and click **AutoScan**.